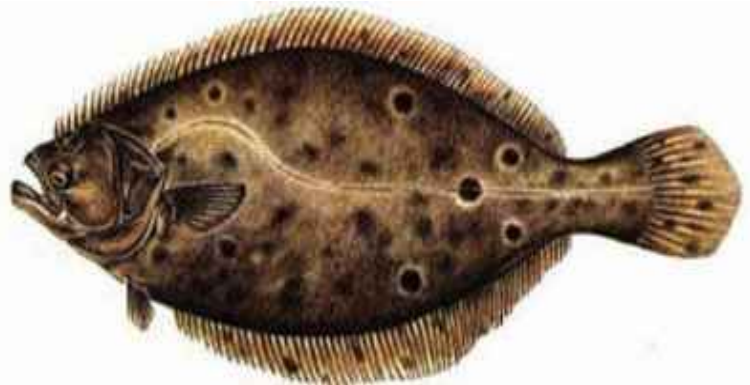


# Grand Finale Fluke Tournament

Sponsored by the: **9/4/10 -9/6/10**



**\$125. per boat for up to four anglers**  
**\$100. per boat if entrance fee is paid by 8/21/10**

**1<sup>st</sup> to 3<sup>rd</sup> place prizes awarded for the total weight of each boat's five largest fluke and one prize for the largest fluke in the tournament**

**1<sup>st</sup> place - \$2500. Cash\***  
**2<sup>nd</sup> place - \$1500. Cash\***  
**3<sup>rd</sup> place - \$750. Cash\***  
**Largest Fluke - \$750. Cash\***  
**(\*Based on 75 Entrants)**

**Fish whatever hours you want on all on all three days of the tournament**  
**Must fish out of Barnegat or Manasquan Inlets**  
**(see rules for exact boundaries)**

**All fish must be weighed by 10:00 PM on 9/6 at**  
**Grumpys Tackle or South Harbor Marina**

**Register by mail, at Grumpys or South Harbor**  
**For further info.**

**call (973) 943-8201 or visit [www.berkeleystriperclub.org](http://www.berkeleystriperclub.org)**